

# SILKON



2026

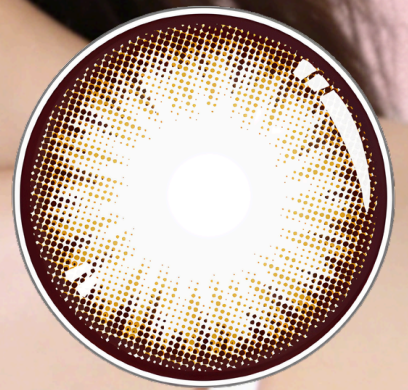
YOUR PERFECT LENS

1  
MONTH

DIA:  
14.2 MM

G.DIA:  
13.9 MM

16  
HOURS



# INNISE HAZEL

2PCS/ BOX

SILICONE HYDROGEL

# INNISE

COLLECTION

SOFT. NATURAL. EFFORTLESS.



**Ocean Gray**



**Ocean Brown**



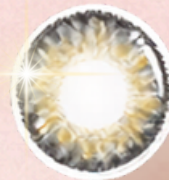
DIA 14.2 | G.DIA 13.9



**Hazel**



**Blue**



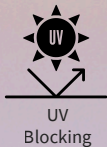
**Gray**



NATURAL COLOR SERIES

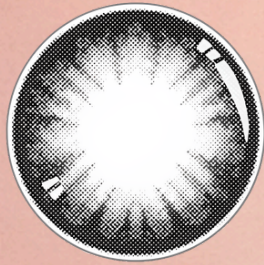
YOUR PERFECT LENS

SIGNATURE COLOUR

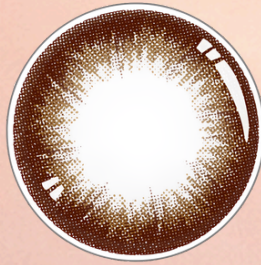


# MANXION

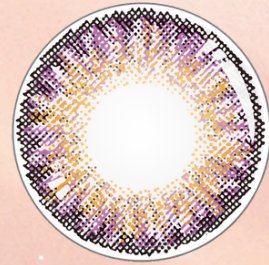
DEFINE YOUR LOOK



Black



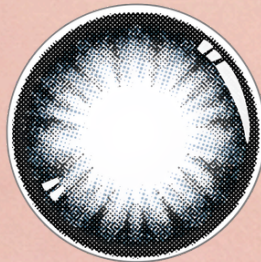
Mocha



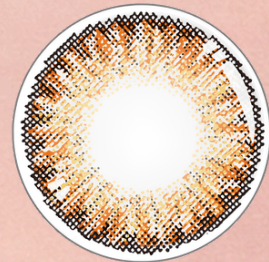
Violet



Sky Brown



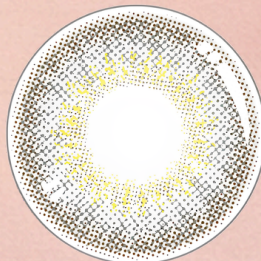
Sky Gray



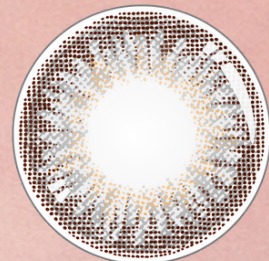
Sugar Brown



Sour Brown



Sour Gray



Cool Gray

Diameter 14.5mm | G.Diameter 14.2mm | Silicone Hydrogel | 16 hours





# SUGAR Q

2 pcs/ box

Dia: 14.5 mm | G. Dia: 14.1 ~ 14.2 mm



## COLOR AVAILABLE

Moonwalker | Twilight | Camouflage | Amigo |  
Cawaii | Effie | Eskimo | Melodee



# VERUS

Bare Eyes



With Gravel



## GRAVEL

- Soft Daily Comfort
- Natural Enlarging Effect
- Silicone Hydrogel

DIA 14.5mm | G.DIA 14.2mm | Daily Wear



Available in 6 Radiant Shades



GRAVEL



CASSAVA



BRONZY



IRONEY



CREAMIE



TOFFEE

**VENUS**  
EVERYDAY GLOW

# CASSO

define gaze

14.2mm | Natural Look

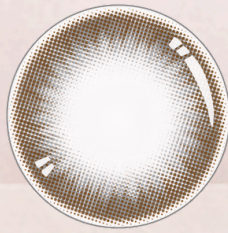
DIA 14.2MM | G.DIA 13.4-14.2MM



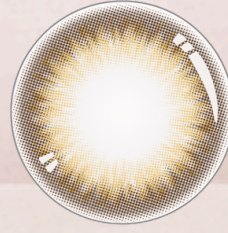
Smokey Mocha



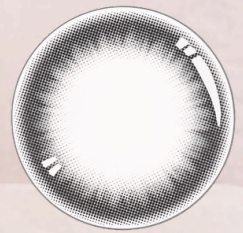
Navy Brown



Navy Gray



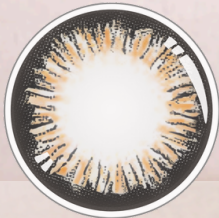
Platinum Brown



Platinum Gray

14.5mm | Bigger, Defined Eyes

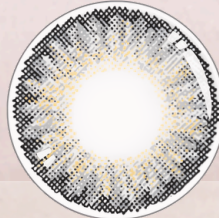
DIA 14.5MM | G.DIA 13.9MM



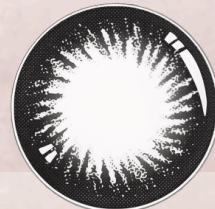
Moonlight Brown



Moonlight Gray



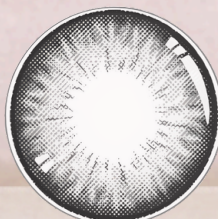
Bold Gray



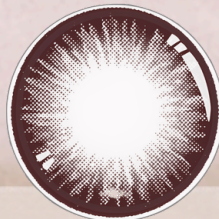
Charcoal



Neon Brown



Neon Gray



Dark Chocolate



Curated Shades for Every Gaze

3 Months Lens | Silicone Hydrogel | 14 hours



# CASSO

defined eyes

Experience bold, defined eyes with our stunning color contact lenses, designed to perfect and illuminate your gaze.

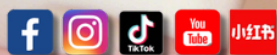
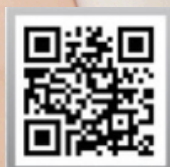
- Enhances your natural eye color
- Available in multiple captivating shades
- Ideal for daily wear

# SILKON

Made in Korea



YOUR PERFECT LENS



SILKON COLOR LENS



# La Thea's

## Natural Monthly Lens



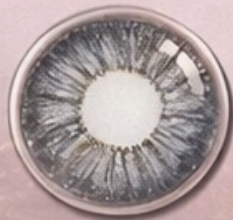
DIA: 14.5MM | G.DIA: 13.6~14.2MM

# La Thea's

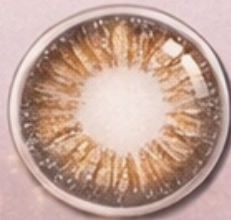
Natural Monthly Lens

— Curated Series for Every Gaze —

## JOWEY



Gray

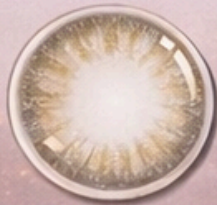


Brown

## HANEE

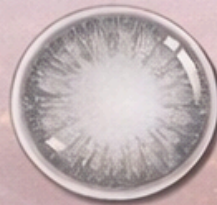


Gray



Brown

## LAZULI



Gray



Brown

*Effortless Beauty, Everyday*

Silicone Hydrogel • 38% Water Content • 14 Hours Wear



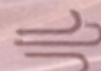
Hydration



UV Protection



Clear Vision



Breathable

# GLIMCOOL

TORIC SERIES



## Precision Vision for Astigmatism

Engineered for stable fit and clear vision, all day long.

 **Toric Lens**  
Designed for astigmatism correction

 **Stable Fit**  
Precision design for consistent comfort

 **Clear Vision**  
Crisp, natural sight in every direction



### SILICONE HYDROGEL

Advanced Breathable Material

- ✓ Superior Oxygen Flow
- ✓ Long-Lasting Moisture
- ✓ Extended Comfort



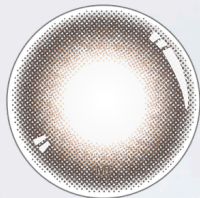
### WHY GLIMCOOL TORIC?

- ✓ High precision design for astigmatism
- ✓ Multiple axis options for custom fit
- ✓ Soft, breathable lens for all-day comfort

 Lens Type <b>Toric</b>	 Water Content <b>43%</b>	Diameter 14.0mm / 14.2mm 14.5mm	Base Curve <b>8.6mm</b>	Wear <b>3 Months</b>
---	---	---------------------------------------	----------------------------	-------------------------

# GLIMCOOL TORIC

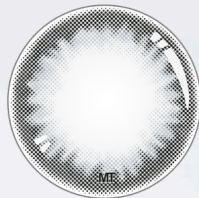
Precision Vision for Astigmatism



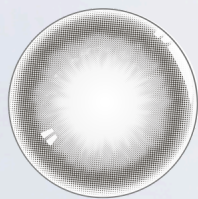
Carmelite



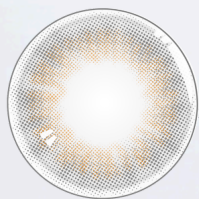
Snowy Khaki



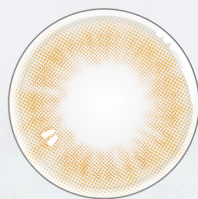
Snowy Gray



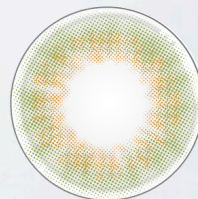
Snowy Sliver



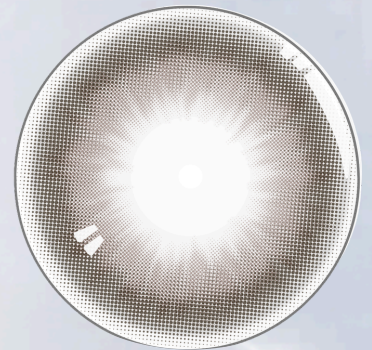
Nebula Frosty



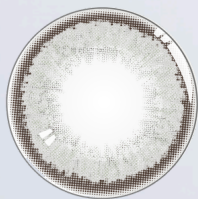
Nebula Maple



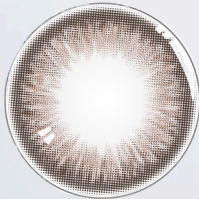
Nebula Sage



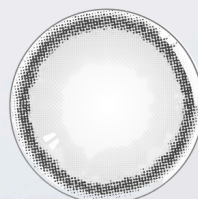
Snowy Bronze



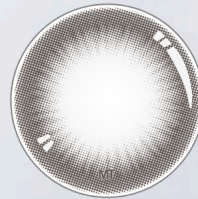
Luminia Misty



Luminia Toffee



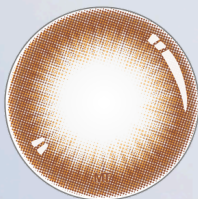
Nimbus Gray



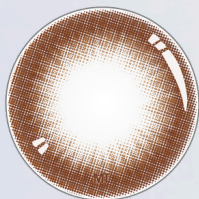
Orion Plutonic



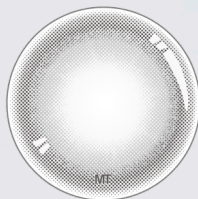
Amazx Canary



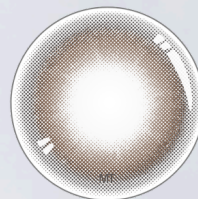
Orion Brown



Orion Russet



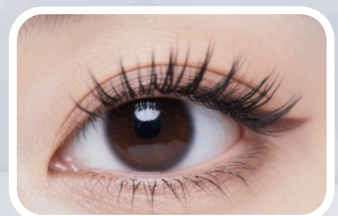
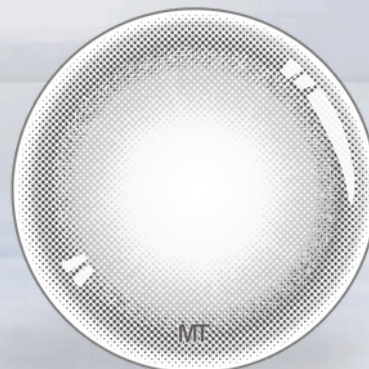
Amazx Ash



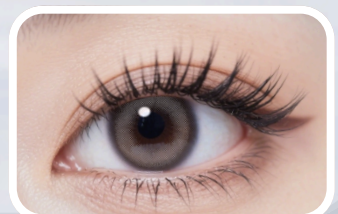
Amazx Bronzite

## Toric Lens (Astigmatism)

- ✓ Axis Available
- ✓ High Precision Fit



Before



After

# EYE MULTI SOLUTION

Daily Care for Clear & Comfortable Vision



MULTI PURPOSE SOLUTION



HYALURONIC ACID



NO RUB FORMULA



## PRODUCT SPECIFICATION

Model Name	EYE PLUS MULTI SOLUTION
Solution Color	Colorless
Main Ingredients	Sodium Chloride
Contents	Boric Acid, Borax, Sodium Bicarbonate, Citric Acid, Edetic Acid Sodium, Poloxamer407, Sorbic Acid, Hydroxyethyl Cellulose, Hyaluronic Acid, Sterilized Water
Effect / Use	Cleanse, Rinses, Disinfects, Stores, Lubricates and removes protein buildup
Storage	Storage at room temperature (1°C ~ 30°C)
Manufacturer	HumanBio, 651 Youngokgil, Ipjang-Myun, Seobuk-GU, Chunan-City, Chungnam, Korea



# Monthly Clear Lens

Silicone Hydrogel

SPH: -0.75 ~ -6.00 (0.25 STEP) | -6.50 ~ -15.00 (0.50 STEP) | 2PCS/6PCS

# LENS SPECIFICATIONS OVERVIEW

Series Spes								
1 MONTHS	✓	✓		✓		✓	✓	
3 MONTHS					✓			✓
1 ~ 3 DAYS			✓					
COLOUR LENS	✓	✓	✓	✓	✓	✓		✓
CLEAR LENS							✓	✓
HYDROGEL					✓			
SILICONE HYDROGEL	✓	✓	✓	✓			✓	✓
WATER CONTENT	38%	38%	38%	38%	42%	38%	38%	43%
METHOD	Cast Molding							
COLOUR DESIGN	C.I.P. Color Printing							
BASE CURVE	8.6mm							
DK/DKT VALUE	68.99 / 86							
CENTER THICKNESS	0.07 ~ 0.13mm							



Korea Food &  
Drug Administration  
Certified



MDA Certified  
GB3113825-203180  
GC3613025-203182





실리콘 렌즈  
Silicone Hydrogel